



Biodiversity Observations

<http://bo.adu.org.za>



An electronic journal published by the Animal Demography Unit at the University of Cape Town

The scope of Biodiversity Observations consists of papers describing observations about biodiversity in general, including animals, plants, algae and fungi. This includes observations of behaviour, breeding and flowering patterns, distributions and range extensions, foraging, food, movement, measurements, habitat and colouration/plumage variations. Biotic interactions such as pollination, fruit dispersal, herbivory and predation fall within the scope, as well as the use of indigenous and exotic species by humans. Observations of naturalised plants and animals will also be considered. Biodiversity Observations will also publish a variety of other interesting or relevant biodiversity material: reports of projects and conferences, annotated checklists for a site or region, specialist bibliographies, book reviews and any other appropriate material. Further details and guidelines to authors are on this website.

Lead Editor: Arnold van der Westhuizen – Paper Editor: Les G Underhill

REPORT ON THE SPRING LEPIBASH FOR LEPIMAP, 15–23 OCTOBER 2016

Megan Loftie-Eaton

Recommended citation format:

Loftie-Eaton M 2016 Report on the Spring LepiBASH for LepiMAP, 15–23 October 2016. Biodiversity Observations 7.89: 1–11.

URL: <http://bo.adu.org.za/content.php?id=282>

Published online: 11 December 2016

PROJECT REPORT

REPORT ON THE SPRING LEPIBASH FOR LEPIMAP, 15–23 OCTOBER 2016

Megan Loftie-Eaton

Animal Demography Unit, Department of Biological Sciences,
University of Cape Town, Rondebosch, 7701 South Africa
Email: meg.loftie.eaton@gmail.com

INTRODUCTION

LepiMAP is the Atlas of African Lepidoptera. It is the continuation of the project known as SABCA (Southern African Butterfly Conservation Assessment), which produced the atlas and Red List for butterflies in South Africa, Lesotho and Swaziland (Mecenero et al. 2013). LepiMAP extends the taxonomy to both butterflies and moths, and extends the area under consideration to Africa. LepiMAP is a joint initiative of the Lepidopterists' Society of Africa and the Animal Demography Unit in the Department of Biological Sciences at the University of Cape Town.

The LepiMAP project has held LepiBASH events twice a year, over a nine-day period from a Saturday to the following Sunday, during the southern autumn and spring. The 2016 Spring LepiBASH ran from Saturday, 15 October to Sunday, 23 October. Even though this event was labelled the Spring LepiBASH, it did focus on the whole of Africa and welcomed any butterfly or moth records from across the continent. The LepiBASH events are drives to increase the amount of data coming into the LepiMAP database. This is the first time a LepiBASH has produced a formal report.

The LepiBASH also featured on Radio Today as part of the Sappi Nature Journal Programme. Listen to the interview with Tim Neary:

http://internal.adu.org.za/upload/uploads/Megan-Loftie-Eaton-and-Lepibash_2016-10-22.mp3.

RESULTS

Numerical

During the nine days of the Spring LepiBASH, a total of 85 observers participated and a total of 2080 records were submitted. As an exception, 386 of these records were submitted after the official LepiBASH period because one of the observers had internet connection problems during the LepiBASH and she could only upload her records afterwards.

Three LepiMAPpers submitted more than 200 records, and the smallest number of records submitted to be part of the top 10 was 45 (Table 1). The person who submitted the most records on each of the nine days was nominated LepiBASHer of the Day (Table 2, Figures 1 and 2).

Table 1. The numbers of records submitted by the top 10 LepiMAPpers for the October LepiBASH

	Name	Records
1	Toy Bodbijn	386
2	Vaughan Jessnitz	383
3	Altha Swiegers Liebenberg	287
4	Rick Nuttall	87
5	Bernardine Altenroxel	83
6	Steve Woodhall	77
7	Sudheer Kommana	68
8	Quartus Grobler	66
9	Riëtte Griesel	48
10	Mary Ellen Lindsay	45

Table 2. The LepiBASHer of the Day for each of the nine days of the October LepiBASH. This was the person who had submitted the most records on the day

Day	LepiBASHer of The Day	Number of Records
1	Altha Liebenberg – Northern Cape	66
2	Sudheer Kommana – Tanzania	68
3	Altha Liebenberg – Northern Cape	63
4	Riëtte Griesel – Free State Province	18
5	Mary Ellen Lindsay – KwaZulu-Natal	14
6	Fanie Rautenbach – Western Cape	7
7	Vaughan Jessnitz – Limpopo Province	237
8	Dawie De Swart – Free State Province	24
9	Rick Nuttall – Free State Province	84



Figure 2. Altha Liebenburg, Danielskuil, Northern Cape, was LepiBASHer of the Day 3 of the October 2016 LepiBASH; she has also submitted the most records on Day 1 (Table 2)



Figure 1. Sudheer Kommana, from Tanzania, was LepiBASHer of the Day for Day 2 of the October 2016 LepiBASH (Table 2)

During the LepiBASH week, LepiMAP received records from 13 African countries, the most countries for a LepiBASH to date (Figure 3): Botswana, Côte d'Ivoire, Ghana, Kenya, Malawi, Mauritania, Mozambique, Namibia, Senegal, Swaziland, Tanzania, Zimbabwe and South Africa. The country, outside of South Africa, for which the most records was Tanzania (68 records).

The first records ever submitted to LepiMAP from Senegal were made during the LepiBASH. Figure 4 shows one of these first records from Senegal, a Painted Lady photographed by Dieter Oschadleus in Dakar while he was attending the Pan-African Ornithological Congress there.

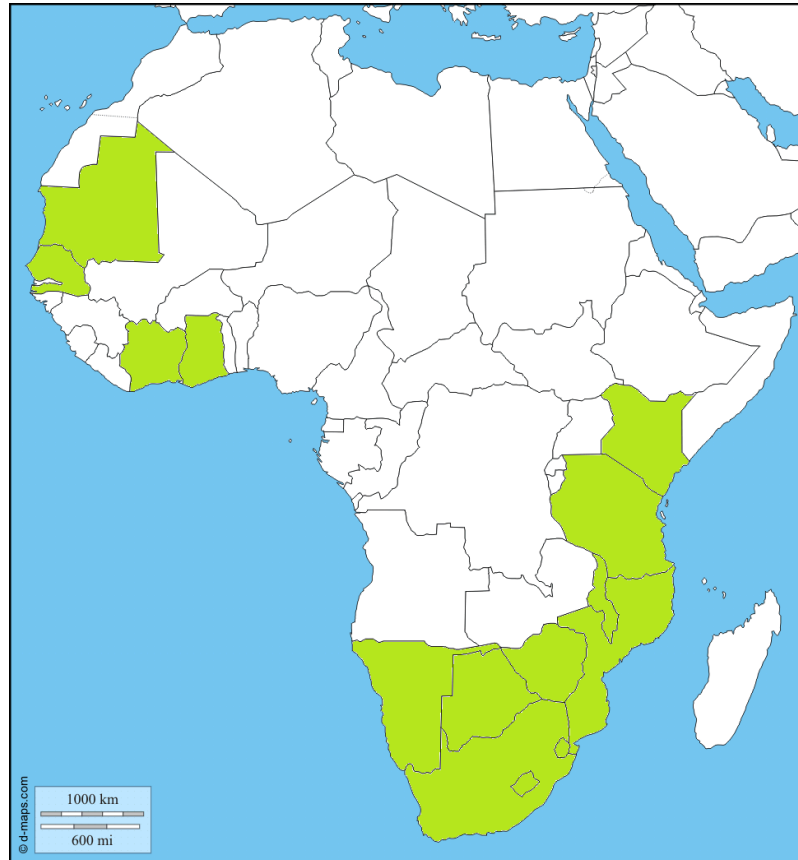


Figure 3. Countries for which LepiMAP records were submitted during the October 2016 LepiBASH. Southern Africa: Botswana, Malawi, Mozambique, Namibia, South Africa, Swaziland and Zimbabwe. Eastern Africa: Kenya and Tanzania. Western Africa: Côte d'Ivoire, Ghana, Mauritania and Senegal.

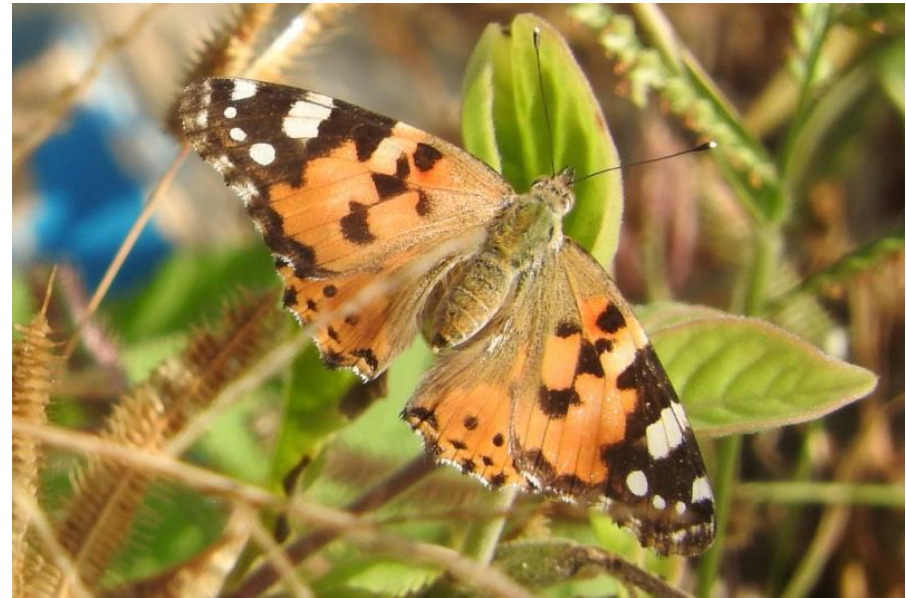


Figure 4. LepiMAP record 605524, a Painted Lady *Vanessa cardui* submitted from Dakar, Senegal, by Dieter Oschadleus.

For South Africa, we received records from all nine provinces (Figure 5). The most records came from KwaZulu-Natal (636), followed by Limpopo (468), and in third place was the Northern Cape (323). We received the fewest records from North-West Province (9).

Species discoveries and interesting records

Of the 2080 records received, 854 had already been identified at the time of producing this report, covering 295 taxa of Lepidoptera (Appendix 1). 1140 of the records were moths, 721 were butterflies and 219 records await classification. A big thank you goes to Fanie Rautenbach, Quartus Grobler, Steve Woodhall and Sonja Maartens for doing the bulk of the identification for October 2016 LepiBASH.

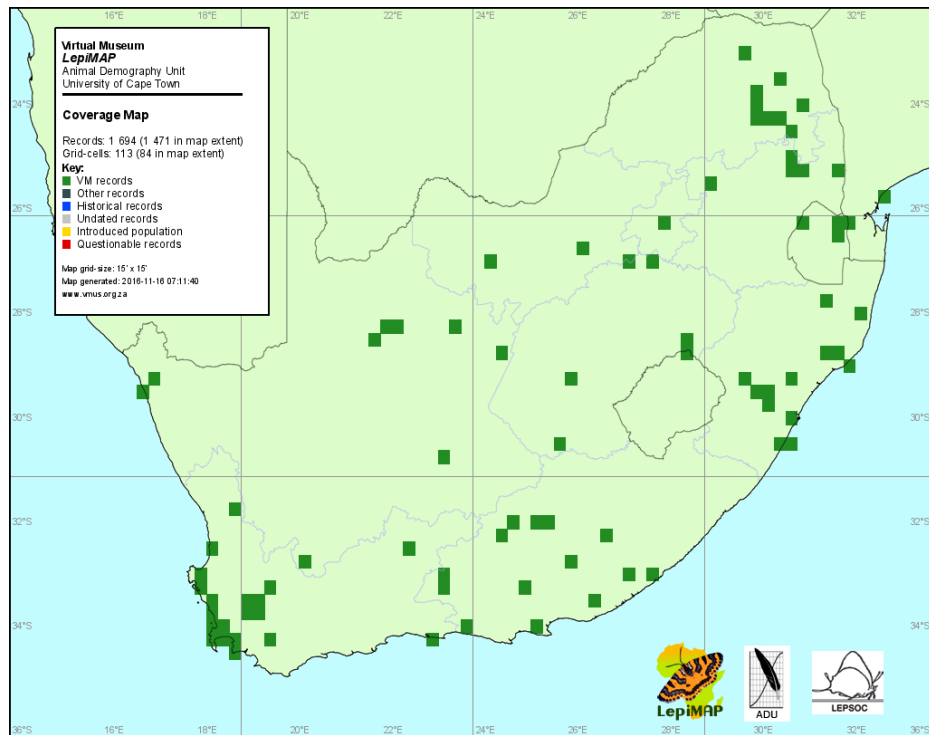


Figure 5. The distribution of the October 2016 LepiBASH records in South Africa, Lesotho and Swaziland. The shaded quarter degree grid cells had records submitted from them.

The species with the most records was the Painted Lady; 29 records were submitted (Appendix 1). After that was the Common Meadow White *Pontia helice helice* with 21 records.

Of the records that have been identified, five are of Red List species. One record is of a Trimen's Opal *Chrysoritis trimeni*, listed as Vulnerable, photographed by Dave Maguire in McDougalls Bay near Port Nolloth, Northern Cape Province, in quarter degree grid cell

(QDGC) 2916BD: <http://vmus.adu.org.za/?vm=LepiMAP-605572>. We have records for this butterfly from this locality as far back as 1968.

Steve Woodhall, Kevin Cockburn and Barry Symons submitted a record of the Vulnerable Estcourt Blue *Lepidochrysops pephredo* for grid cell 2929BB near Estcourt, KwaZulu-Natal Province: <http://vmus.adu.org.za/?vm=LepiMAP-606745>. The Estcourt Blue was first recorded in this grid cell in 1889 by C.W. Morrison.

From the same locality, we received one record of a Dingaan's Widow *Dingana dingana*, listed as Vulnerable, photographed by Steve Woodhall: <http://vmus.adu.org.za/?vm=LepiMAP-606741>. There is a LepiMAP record for Dingaan's Widow from grid cell 2929BB dating back to 1868, a specimen collected from Malanspruit, near the town of Estcourt, KwaZulu-Natal.

We received two records from grid cell 2430AA of the Endangered Lotana Blue *Lepidochrysops lotana*, photographed by Vaughan Jessnitz in Lekgalameetse Nature Reserve, south of Tzaneen, in Limpopo Province: <http://vmus.adu.org.za/?vm=LepiMAP-606412> and <http://vmus.adu.org.za/?vm=LepiMAP-606413>. We have only 35 records of this butterfly in the LepiMAP database from various localities in the mountains of eastern Limpopo Province

On each of the nine days of the Heritage Hunt, a record of interest was selected from those that had been submitted, and become the Record of the Day (Table 3, Figures 4 and 5). This was posted to the LepiMAP Facebook page (<https://www.facebook.com/LepiMAP>) and shared from there to other Facebook pages, groups and timelines, as appropriate. The motivations for the selection of each of the nine Records of the Day is presented in Table 1. There are also links to these records in the Virtual Museum.

Table 3. The records highlighted as interesting records on each day of the October 2016 LepiBASH. The link to the record in the LepiMAP section of the ADU Virtual Museum is also provided.

Day	LepiMAP observer	Motivation	URL of record in Virtual Museum
1	Graeme Young	A wonderful representation of the diversity among moths	http://vmus.adu.org.za/?vm=LepiMAP-605243
2	Dieter Oschadleus	Our first ever record from Senegal (Figure 2)	http://vmus.adu.org.za/?vm=LepiMAP-605382
3	Bart Wursten	We want moth records from anywhere in Africa	http://vmus.adu.org.za/?vm=LepiMAP-605630
4	Riëtte Griesel	Riette put in a lot of effort to find one of these butterflies – a Barber's Ranger <i>Kedestes barberae</i> (Figure 6)	http://vmus.adu.org.za/?vm=LepiMAP-605719
5	Andrew and Heather Hodgson	It serves as a good reminder to all LepiMAPpers that you can upload photos of caterpillars to LepiMAP too	http://vmus.adu.org.za/?vm=LepiMAP-605732
6	Jerome Ainsley	Jerome writes: "in Sandton [Gauteng Province] there are suddenly more butterflies flying around after some good soaking rain in the last couple of days. Some flying ants are emerging, and swallows and swifts are having a fine feed"	http://vmus.adu.org.za/?vm=LepiMAP-605863
7	Quartus Grobler	Quartus is a valued member of the LepiMAP expert panel, he also submits records to LepiMAP regularly	http://vmus.adu.org.za/?vm=LepiMAP-605889
8	Anthony Archer	Tony put in a lot of effort to find some butterflies to photograph in the dry North-West Province, on Day Eight he finally found one! It is an Orange Tip <i>Colotis evenina evenina</i>	http://vmus.adu.org.za/?vm=LepiMAP-606317
9	Lia Steen	Lia's record from Kenya serves as a reminder that LepiMAP is mapping the butterflies and moths from all over Africa (Figure 7)	http://vmus.adu.org.za/?vm=LepiMAP-606625



Figure 6. Record of the Day for Day 4 of the October 2016 LepiBASH (see Table 2)



Figure 7. Record of the Day for Day 8 of the October 2016 LepiBASH (see Table 2)

ACKNOWLEDGEMENTS

We would like to thank the amazing citizen scientists, the BioMAPpers, for their enthusiasm and contributions towards biodiversity conservation in Africa. A big thank you also goes to the LepiMAP expert panel for all their hard work and the many hours they put into identifying the LepiMAP records; this is non-glamorous behind-the-scenes work, but crucial for the success of LepiMAP. We are grateful for the support of the Lepidopterists' Society of Africa (LepSoc). And last but not least, a massive thank you to Rene Navarro, the ADU Virtual Museum data systems manager and superhero, for always making sure that the Virtual Museum runs smoothly.

REFERENCE

Mecenero S, Ball JB, Edge DA, Hamer ML, Henning GA, Krüger MA, Pringle EL, Terblanche RF, Williams MC 2013. Conservation assessment of butterflies of South Africa, Lesotho and Swaziland: Red List and atlas. Saffronics (Pty) Limited, Johannesburg, and Animal Demography Unit, Cape Town.

Appendix 1. Results of the October 2016 LepiBASH.

This is a list of taxa identified to date, and numbers of records of each taxon. Records are identified to either to species or subspecies whenever possible. Occasionally, only identification to genus or family is possible from the photographs submitted.

Family	Taxon	Records
Aganaidae	<i>Asota speciosa speciosa</i>	1
Arctiidae	<i>Amata alicia alicia</i>	1
Arctiidae	<i>Amata cerbera cerbera</i>	2
Arctiidae	<i>Amphicallia bellatrix bellatrix</i>	1
Arctiidae	<i>Argina amanda amanda</i>	1
Arctiidae	<i>Cyana rhodostriata rhodostriata</i>	1
Arctiidae	<i>Eilema sanguicosta sanguicosta</i>	1
Arctiidae	<i>Estigmene lemniscata lemniscata</i>	2
Arctiidae	<i>Ilemodes heterogyna heterogyna</i>	2
Arctiidae	<i>Paralacydes arborifera arborifera</i>	1
Arctiidae	<i>Siccia caffra caffra</i>	2
Arctiidae	<i>Utetheisa pulchella pulchella</i>	2
Cossidae	<i>Macrocoessus toluinus toluinus</i>	1
Crambidae	<i>Bocchoris flavibrunnea flavibrunnea</i>	1
Crambidae	<i>Cirrhochrista grabczewskyi grabczewskyi</i>	1
Crambidae	<i>Ischnurges lancinalis lancinalis</i>	1
Crambidae	<i>Loxostege venustalis venustalis</i>	1
Crambidae	<i>Nausinoe geometralis geometralis</i>	1
Crambidae	<i>Parotis</i>	1
Crambidae	<i>Terastia meticulosalis meticulosalis</i>	1
Crambidae	<i>Udea ferrugalis ferrugalis</i>	1

Family	Taxon	Records
Drepanidae	<i>Negera natalensis natalensis</i>	1
Eupterotidae	<i>Phiala</i>	1
Geometridae	<i>Allochrostes biornata biornata</i>	2
Geometridae	<i>Eupithecia infelix infelix</i>	1
Geometridae	<i>Idaea sublimbaria sublimbaria</i>	1
Geometridae	<i>Lophorrhachia rubricorpus rubricorpus</i>	1
Geometridae	<i>Mixocera frustratoria frustratoria</i>	1
Geometridae	<i>Omphax</i>	1
Geometridae	<i>Prasinocyma immaculata immaculata</i>	1
Geometridae	<i>Problepsis aegretta aegretta</i>	1
Geometridae	<i>Psilocerea pulverosa pulverosa</i>	1
Geometridae	<i>Scopula</i>	1
Geometridae	<i>Thalassodes quadraria quadraria</i>	1
Geometridae	<i>Traminda ocellata ocellata</i>	1
Geometridae	<i>Zamarada</i>	2
Geometridae	<i>Zerenopsis lepida lepida</i>	4
Hesperiidae	<i>Acleros mackenii mackenii</i>	1
Hesperiidae	<i>Artitropa erinnys erinnys</i>	1
Hesperiidae	<i>Borbo fatuellus fatuellus</i>	1
Hesperiidae	<i>Coeliades forestan forestan</i>	1
Hesperiidae	<i>Coeliades keithloa</i>	1
Hesperiidae	<i>Eretis umbra umbra</i>	1
Hesperiidae	<i>Gegenes niso niso</i>	2
Hesperiidae	<i>Gomalia elma elma</i>	2
Hesperiidae	<i>Kedestes barberae bonsa</i>	1
Hesperiidae	<i>Kedestes macomo</i>	1
Hesperiidae	<i>Netrobalane canopus</i>	1

Family	Taxon	Records
Hesperiidae	<i>Sarangesa seineri seineri</i>	1
Hesperiidae	<i>Spialia</i>	1
Hesperiidae	<i>Spialia diomus ferax</i>	1
Hesperiidae	<i>Spialia spio</i>	3
Hesperiidae	<i>Tagiades flesus</i>	2
Hesperiidae	<i>Zenonia zeno</i>	1
Lasiocampidae	<i>Pachypasa capensis capensis</i>	1
Lasiocampidae	<i>Rhinobombyx cuneata cuneata</i>	1
Limacodidae	<i>Afraltha chionostola chionostola</i>	1
Limacodidae	<i>Coenobasis amoena amoena</i>	1
Lycaenidae	<i>Actizera lucida</i>	1
Lycaenidae	<i>Aloeides</i>	1
Lycaenidae	<i>Aloeides almeida</i>	2
Lycaenidae	<i>Aloeides aranda</i>	3
Lycaenidae	<i>Aloeides damarensis damarensis</i>	3
Lycaenidae	<i>Aloeides oreas</i>	1
Lycaenidae	<i>Aloeides pierus</i>	4
Lycaenidae	<i>Aloeides swanepoeli</i>	3
Lycaenidae	<i>Aloeides thyra thyra</i>	2
Lycaenidae	<i>Anthene definita definita</i>	1
Lycaenidae	<i>Anthene larydas</i>	1
Lycaenidae	<i>Argyraspodes argyraspis</i>	2
Lycaenidae	<i>Axiocerses croesus</i>	3
Lycaenidae	<i>Axiocerses punicea punicea</i>	1
Lycaenidae	<i>Axiocerses tjoane tjoane</i>	4
Lycaenidae	<i>Azanus jesous</i>	1
Lycaenidae	<i>Azanus moriqua</i>	3

Family	Taxon	Records
Lycaenidae	<i>Azanus ubaldus</i>	3
Lycaenidae	<i>Cacyreus dicksoni</i>	1
Lycaenidae	<i>Cacyreus lingeus</i>	1
Lycaenidae	<i>Cacyreus marshalli</i>	8
Lycaenidae	<i>Capys alpheus alpheus</i>	2
Lycaenidae	<i>Chilades trochylus</i>	1
Lycaenidae	<i>Chryсорitis chrysaor</i>	4
Lycaenidae	<i>Chryсорitis midas</i>	2
Lycaenidae	<i>Chryсорitis palmus palmus</i>	1
Lycaenidae	<i>Chryсорitis thysbe osbecki</i>	5
Lycaenidae	<i>Chryсорitis trimeni</i>	1
Lycaenidae	<i>Chryсорitis zonarius zonarius</i>	6
Lycaenidae	<i>Cigaritis ella</i>	1
Lycaenidae	<i>Cigaritis natalensis</i>	3
Lycaenidae	<i>Cigaritis phanes</i>	1
Lycaenidae	<i>Crudaria leroma</i>	4
Lycaenidae	<i>Cupidopsis cissus cissus</i>	1
Lycaenidae	<i>Cupidopsis jobates jobates</i>	2
Lycaenidae	<i>Eicochrysops hippocrates</i>	1
Lycaenidae	<i>Eicochrysops messapus mahallakoena</i>	8
Lycaenidae	<i>Eicochrysops messapus messapus</i>	2
Lycaenidae	<i>Euchrysops subpallida</i>	1
Lycaenidae	<i>Hypolycaena pachalica</i>	1
Lycaenidae	<i>Lampides boeticus</i>	9
Lycaenidae	<i>Lepidochrysops</i>	1
Lycaenidae	<i>Lepidochrysops patricia</i>	1

Family	Taxon	Records
Lycaenidae	<i>Lepidochrysops pephredo</i>	1
Lycaenidae	<i>Lepidochrysops tantalus</i>	1
Lycaenidae	<i>Lepidochrysops variabilis</i>	1
Lycaenidae	<i>Leptomyrina gorgias gorgias</i>	1
Lycaenidae	<i>Leptomyrina lara</i>	3
Lycaenidae	<i>Leptotes</i>	17
Lycaenidae	<i>Lycaena clarki</i>	1
Lycaenidae	<i>Lycaena orus</i>	1
Lycaenidae	<i>Phasis thero thero</i>	3
Lycaenidae	<i>Stugeta bowkeri bowkeri</i>	1
Lycaenidae	<i>Tarucus sybaris sybaris</i>	8
Lycaenidae	<i>Trimenia argyropлага argyropлага</i>	1
Lycaenidae	<i>Trimenia macmasteri macmasteri</i>	2
Lycaenidae	<i>Trimenia macmasteri mijburghi</i>	1
Lycaenidae	<i>Tuxentius calice</i>	1
Lycaenidae	<i>Tuxentius melaena griqua</i>	1
Lycaenidae	<i>Tuxentius melaena melaena</i>	2
Lycaenidae	<i>Zintha hintza hintza</i>	4
Lycaenidae	<i>Zizeeria knysna knysna</i>	11
Lycaenidae	<i>Zizula hylax</i>	1
Lymantriidae		1
Lymantriidae	<i>Marblepsis melanocraspis melanocraspis</i>	1
Lymantriidae	<i>Palasea albimacula albimacula</i>	1
Lymantriidae	<i>Schalidomitra ambages ambages</i>	1
Metarbelidae		1
Noctuidae	<i>Acontia guttifer a guttifer a</i>	2

Family	Taxon	Records
Noctuidae	<i>Acontia umbriger a umbriger a</i>	1
Noctuidae	<i>Agrotis spinifer us spinifer us</i>	1
Noctuidae	<i>Anoba</i>	2
Noctuidae	<i>Anoba atriplaga atriplaga</i>	1
Noctuidae	<i>Anomis</i>	1
Noctuidae	<i>Antiophlebia bracteata bracteata</i>	1
Noctuidae	<i>Brephos festiva festiva</i>	1
Noctuidae	<i>Brevipecten</i>	2
Noctuidae	<i>Cerocala vermiculosa vermiculosa</i>	1
Noctuidae	<i>Chrysozonata purpurascens purpurascens</i>	1
Noctuidae	<i>Cometaster pyrula pyrula</i>	1
Noctuidae	<i>Ctenusa varians varians</i>	1
Noctuidae	<i>Cucullia hutchinsoni hutchinsoni</i>	1
Noctuidae	<i>Cuneisigna obstans obstans</i>	2
Noctuidae	<i>Diaphone eumela eumela</i>	3
Noctuidae	<i>Dysgonia properans properans</i>	2
Noctuidae	<i>Ericeia congressa congressa</i>	2
Noctuidae	<i>Eutelia adulatrix adulatrix</i>	2
Noctuidae	<i>Gracilodes</i>	1
Noctuidae	<i>Grammodes stolid a stolid a</i>	1
Noctuidae	<i>Helicoverpa armigera armigera</i>	3
Noctuidae	<i>Hypopyra carneotincta carneotincta</i>	1
Noctuidae	<i>Mentaxya albifrons albifrons</i>	2
Noctuidae	<i>Ophiusa selenaris selenaris</i>	1
Noctuidae	<i>Ophiusa tirhaca tirhaca</i>	1
Noctuidae	<i>Oraesia emarginata emarginata</i>	1

Family	Taxon	Records
Noctuidae	<i>Pantylia scissa scissa</i>	1
Noctuidae	<i>Radara vacillans vacillans</i>	1
Noctuidae	<i>Rhanidophora ridens ridens</i>	1
Noctuidae	<i>Sommeria</i>	1
Noctuidae	<i>Sphingomorpha chlorea chlorea</i>	3
Nymphalidae	<i>Acraea acara acara</i>	2
Nymphalidae	<i>Acraea anemosa</i>	1
Nymphalidae	<i>Acraea caldarena caldarena</i>	1
Nymphalidae	<i>Acraea horta</i>	7
Nymphalidae	<i>Acraea natalica</i>	6
Nymphalidae	<i>Acraea neobule neobule</i>	10
Nymphalidae	<i>Acraea nohara nohara</i>	1
Nymphalidae	<i>Acraea oncaea</i>	1
Nymphalidae	<i>Acraea stenobea</i>	1
Nymphalidae	<i>Acraea violarum</i>	1
Nymphalidae	<i>Amauris albimaculata albimaculata</i>	7
Nymphalidae	<i>Amauris ochlea ochlea</i>	5
Nymphalidae	<i>Bicyclus safitza safitza</i>	15
Nymphalidae	<i>Byblia</i>	1
Nymphalidae	<i>Byblia anvatara acheloia</i>	1
Nymphalidae	<i>Byblia ilithyia</i>	1
Nymphalidae	<i>Cassionympha cassius</i>	2
Nymphalidae	<i>Catacroptera cloanthe cloanthe</i>	1
Nymphalidae	<i>Charaxes achaemenes achaemenes</i>	1
Nymphalidae	<i>Charaxes candiope</i>	2
Nymphalidae	<i>Charaxes jahluca rex</i>	1

Family	Taxon	Records
Nymphalidae	<i>Charaxes jasius saturnus</i>	2
Nymphalidae	<i>Charaxes pelias</i>	1
Nymphalidae	<i>Charaxes varanes varanes</i>	1
Nymphalidae	<i>Danaus chrysippus orientis</i>	11
Nymphalidae	<i>Dingana dingana</i>	1
Nymphalidae	<i>Eurytela dryope angulata</i>	1
Nymphalidae	<i>Hamanumida daedalus</i>	3
Nymphalidae	<i>Heteropsis perspicua perspicua</i>	1
Nymphalidae	<i>Junonia hierta cebrene</i>	13
Nymphalidae	<i>Junonia natalica natalica</i>	5
Nymphalidae	<i>Junonia oenone oenone</i>	6
Nymphalidae	<i>Junonia orithya madagascariensis</i>	1
Nymphalidae	<i>Junonia terea elgiva</i>	1
Nymphalidae	<i>Lachnoptera ayresii</i>	1
Nymphalidae	<i>Libythea labdaca laius</i>	4
Nymphalidae	<i>Melampias huebneri huebneri</i>	1
Nymphalidae	<i>Neptis saclava marpessa</i>	3
Nymphalidae	<i>Pardopsis punctatissima</i>	1
Nymphalidae	<i>Phalanta phalantha aethiopica</i>	2
Nymphalidae	<i>Precis archesia archesia</i>	4
Nymphalidae	<i>Precis ceryne ceryne</i>	1
Nymphalidae	<i>Precis octavia sesamus</i>	2
Nymphalidae	<i>Protogoniomorpha parhassus</i>	1
Nymphalidae	<i>Pseudonympha magus</i>	1
Nymphalidae	<i>Pseudonympha trimenii ruthae</i>	2
Nymphalidae	<i>Stygionympha irrorata</i>	3
Nymphalidae	<i>Tarsocera cassina</i>	2

Family	Taxon	Records
Nymphalidae	<i>Tarsocera fulvina</i>	2
Nymphalidae	<i>Telchinia burni</i>	1
Nymphalidae	<i>Telchinia cabira</i>	1
Nymphalidae	<i>Telchinia encedon encedon</i>	4
Nymphalidae	<i>Telchinia esebria</i>	2
Nymphalidae	<i>Telchinia obeira</i>	1
Nymphalidae	<i>Telchinia serena</i>	2
Nymphalidae	<i>Vanessa cardui</i>	29
Nymphalidae	<i>Ypthima</i>	1
Nymphalidae	<i>Ypthima asterope hereroica</i>	3
Papilionidae	<i>Graphium antheus</i>	3
Papilionidae	<i>Graphium colonna</i>	1
Papilionidae	<i>Graphium morania</i>	1
Papilionidae	<i>Graphium porthaon porthaon</i>	3
Papilionidae	<i>Papilio dardanus cenea</i>	2
Papilionidae	<i>Papilio demodocus demodocus</i>	16
Papilionidae	<i>Papilio nireus lyaeus</i>	3
Pieridae	<i>Afrodryas leda</i>	1
Pieridae	<i>Belenois aurota</i>	5
Pieridae	<i>Belenois creona severina</i>	12
Pieridae	<i>Belenois gidica abyssinica</i>	8
Pieridae	<i>Belenois zochalia zochalia</i>	1
Pieridae	<i>Catopsilia florella</i>	2
Pieridae	<i>Colias electo electo</i>	2
Pieridae	<i>Colotis annae annae</i>	2
Pieridae	<i>Colotis antevippe gavis</i>	1
Pieridae	<i>Colotis auxo auxo</i>	1

Family	Taxon	Records
Pieridae	<i>Colotis euipe omphale</i>	3
Pieridae	<i>Colotis evagore antigone</i>	1
Pieridae	<i>Colotis evenina evenina</i>	2
Pieridae	<i>Dixeia charina charina</i>	2
Pieridae	<i>Dixeia pigea</i>	7
Pieridae	<i>Dixeia spilleri</i>	1
Pieridae	<i>Eurema brigitta brigitta</i>	6
Pieridae	<i>Mylothris agathina agathina</i>	10
Pieridae	<i>Mylothris rueppellii haemus</i>	1
Pieridae	<i>Pieris brassicae</i>	5
Pieridae	<i>Pinacopteryx eriphia eriphia</i>	1
Pieridae	<i>Pontia helice helice</i>	21
Pieridae	<i>Teracolus agoye bowkeri</i>	2
Pieridae	<i>Teracolus eris eris</i>	1
Pieridae	<i>Teracolus subfasciatus</i>	1
Plutellidae	<i>Plutella xylostei xylostei</i>	1
Saturniidae	<i>Bunaea alcinoe alcinoe</i>	1
Saturniidae	<i>Gynanisa maja maja</i>	1
Saturniidae	<i>Heniocha dyops dyops</i>	1
Sphingidae	<i>Acherontia atropos atropos</i>	1
Sphingidae	<i>Agrius convolvuli convolvuli</i>	2
Sphingidae	<i>Nephele comma comma</i>	2
Sphingidae	<i>Temnora pseudopylas pseudopylas</i>	1
Thyretidae	<i>Thyretes caffra caffra</i>	3
Thyrididae	<i>Arniocera auriguttata auriguttata</i>	1